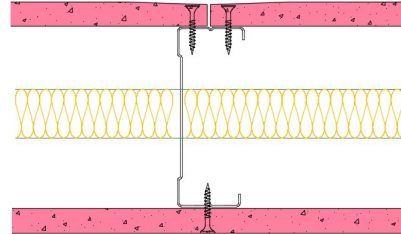


92-B-55(25) - SPEEDLINE System Data Sheet - Version V1 (24-10-23)

SPEEDLINE 92mm 'C' Stud Partition @600mm Ctrs,
with BG Gyproc 12.5mm FireLine each side, 25mm
APR



System Performance Breakdown

Fire Resistance:

BS476 Part 22:1987:

Test Ref & Date or Applied Ref & Report:

Max Height:

Thickness:

Duty Grade: BS 5234: Part 2:1992:

Sound Insulation:

30/30 Minutes (Integrity/Insulation).

BTC 17439F - BRE Report P102396-1011A

Refer to Speedline Specification Clause

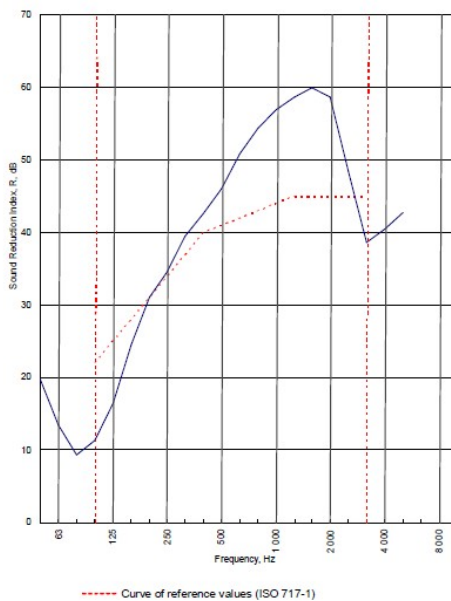
119 mm. (At Base Track, Excluding Finishes)

Medium - Annexes A-F

41 R_w dB, Date Tested or Assessed Against - 70-B-51(25)

Test Code:
H17484AA
Test Date:
14/07/2011

Freq. Hz	R dB
50	19.9
63	13.5
80	9.3
100	11.3
125	16.4
160	24.5
200	31.0
250	34.5
315	39.5
400	42.6
500	46.0
630	50.8
800	54.4
1 000	56.9
1 250	58.6
1 600	59.9
2 000	58.6
2 500	48.4
3 150	38.6
4 000	40.4
5 000	42.8
6 300	
8 000	
10 000	



Rating according to
BS EN ISO 717-1:1997

R_w (C;Ctr) = 41 (-4;-11) dB
Max dev. 10.7 dB at 100 Hz

Evaluation based on laboratory measurement results obtained by an engineering method:

$C_{50-3150}$ = -5 dB	$C_{50-5000}$ = -5 dB	$C_{100-5000}$ = -3 dB
$C_{0,50-3150}$ = -15 dB	$C_{0,50-5000}$ = -15 dB	$C_{0,100-5000}$ = -11 dB

TESTED AT ONE OF THE UKAS ACCREDITED LABORATORIES BELOW

B.T.C
(H-Ref on Graph)



B.R.E



AIRO



S.R.L



Customer: Metsec plc Hepsec Division

BTC 17484A: Page 9 of 11



SPEEDLINE Drywall Systems, Adsetts House, 16 Europa View, Sheffield Business Park, Sheffield, S9 1XH.

Tel: 0114 231 8030.

Email: enquiries@speedlinedrywall.co.uk

(As per the requirements set out in ISO/IEC 17025:2017 regarding test data the results stated have been carried out by voestalpine Metsec plc as part of the contract to supply Speedline Metal Sections to SIG Plc)